

## Welcome to the Middle School Open House

Duration is about 1 hour!

Things to keep in mind:

- Please keep yourself on mute
- We will have Q&A time at the end of the meeting where we will answer your questions. Please write down your questions in the chat or feel free to speak during the Q&A time.
- This meeting will be recorded. For this reason, you may choose to not use your camera. We do like to see the faces of our parents & students so feel free to keep the video on! 😊

We will be with you shortly!



ENLIGHTIUM  
ACADEMY

# Welcome to Enlightenment Academy

## 2021-2022 Virtual Open House

# Meet the Administrators



**Thomas Lambert**

Head of School

[Learn more >](#)



**Will Mead**

PreK–12 Principal

[Learn more >](#)



**Irina Martin**

Dean of Academics

[Learn more >](#)

# School Counselors



**Leah Wolters**

5th-6th Grade Counselor

[Learn more >](#)



**Heather Blackburn**

Grade 7 Counselor

[Learn more >](#)



**Marina Vagin**

Director of the Elementary and Middle  
School Counseling Department & 8th  
Grade Counselor

[Learn more >](#)

# Poll #1

# Who Are We?

- Established in 2003 in Spokane, WA
  - Private, Christian School for K-12 students
  - Accredited by ACSI, Cognia, and WA state approved
  - Students from all over the US and internationally
  - Most innovative online Christian school
- Offer NCAA-approved, Honors, AP, and Concurrent Credit and Dual Enrollment courses
  - Offer Career & Technical Electives, Premium world language electives, online music lessons, and metacognition electives,
  - Completely virtual, including qualified teachers and guidance counselors.
  - Founder launched 7 local brick and mortar schools on the west coast
  - Provide comprehensive online educational experience

# Best of Private and Online Education

Maximize one-on-one support and nurture independent learners

Safe, effective, and flexible learning environment

Be equipped with resources to be up to date on the students progress and have access to unit summaries to help quiz students on the material.

Parental involvement is key.



ENLIGHTIUM  
ACADEMY



# Who Can Enlightium Serve Best?

- Students needing **tailored one-on-one support**
  - Students needing **flexible schedules**
  - Student needing **college preparatory** guidance
  - Students wishing to **graduate early**
- Students wishing to **pursue military**
  - Students seeking **colleges and universities**
  - **Co-ops** and **microschools**
  - **Athletic and fine arts** facilities



# Poll #2

# What to expect during the weeks of the semester



- **First day of school is August 23, 2021**
- **Orientation Course** (assigned a few days before the school year starts)
- **5 core subjects**
  - Bible, English, History, Science, and Math
- **Electives**
  - 1 credit of [electives](#) is included in tuition for MS students
    - *WL are available (for a fee)*
    - *Advanced 8th graders may qualify for HS level electives. (Per counselor approval)*
  - [Offline Electives](#)
    - *PE/Sports, HomeEc, Fine Arts, Music, Dance, Computer, World Language, Photography, etc.*
    - 0.5 credit (60 hrs) or 1.0 credit (120 hrs)
- **Access to Naviance**

# How Do Offline Electives Work?

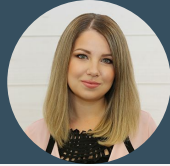


Offline Electives are not taken through Ignitia!

- A Placeholder is assigned in IG
- Track hours on OE Form
- Prepare evidence
- Submit on time



# Naviance: Student View



*The Naviance CCLR lessons are interactive and opinion driven. There is no wrong answer. The lessons are designed to help students think about topics like, "What Makes Me Unique?" "My Career Goals." "Challenging Myself." "National Scholarship Search." "My Resume." "Leaving Home."*

- 8th graders are required to complete 5 lessons
- Naviance accounts will be assigned for the 2nd semester
- 6-7 students are not required to complete lessons in Naviance but may request an account to be created

\*Email your counselor to request an account if you want it before the 2nd semester.

The screenshot displays the Naviance student interface. On the left, the 'Lesson Progress' section shows a 0% completion rate and a list of filterable lessons: All Lessons (17), Self Discovery (7), Success Skills (3), Support Network (2), Career Planning (1), College Planning (1), and Financial Planning (1). A red box highlights the 'All Lessons (17)' button, with a callout box stating: 'Please choose any 5 lessons from the total lessons available. We recommend the "Self Discovery" and "Success Skills" for 6-8th grade students.' The main area, titled 'HOME | Your Current Lessons', features a grid of six lesson cards: 'What Do You Know?', 'Listening to Myself', 'What Makes Me Unique?', 'Overcoming Obstacles', 'How I Learn', and 'Habits for Success'. Each card includes a 'Get Started' button and a 'See Results' button. A pagination indicator at the bottom right shows '1 2 3'.

### Premium Course with Middlebury teacher:

*(Chinese)*

- \$1250 for a full year
- \$750 for 1 semester

### Premium Course with Enlightium teacher:

*(French, German, Spanish, and Latin)*

- \$650 for a full year
- \$400 for 1 semester



Click on the Video for a quick overview of the Premium World Language Program!

# Add-On Programs

1-on-1 Live & Online Music Lessons



Guitar Lessons



Piano • Keyboard  
Lessons



Ukulele Lessons



Bongos Lessons



Violin Lessons



Mandolin  
Lessons



Singing Lessons



Drum Lessons

Other  
Instruments

8 Hours / 1 Semester - \$650



16 Hours / 1 year - \$1250

NEW instrument included with your 30 or 60 minute lessons!

[Learn more >](#)

*“Creative Kids Acting classes are designed for the students to have exciting adventures in creativity, build confidence, stretch the imagination, and develop reading and memorization skills, as well as learn many different types of performance skills and emotional delivery.”*

- **Classes are held twice per month providing four hours of live instruction monthly.**
- **Some of the themes that the course may cover include:**
  - **On-camera acting techniques for film, television, and commercials**
  - **Comedy improvisation**
  - **Method acting**
  - **Meisner technique**
  - **Character building**



**Semester Course: \$650**

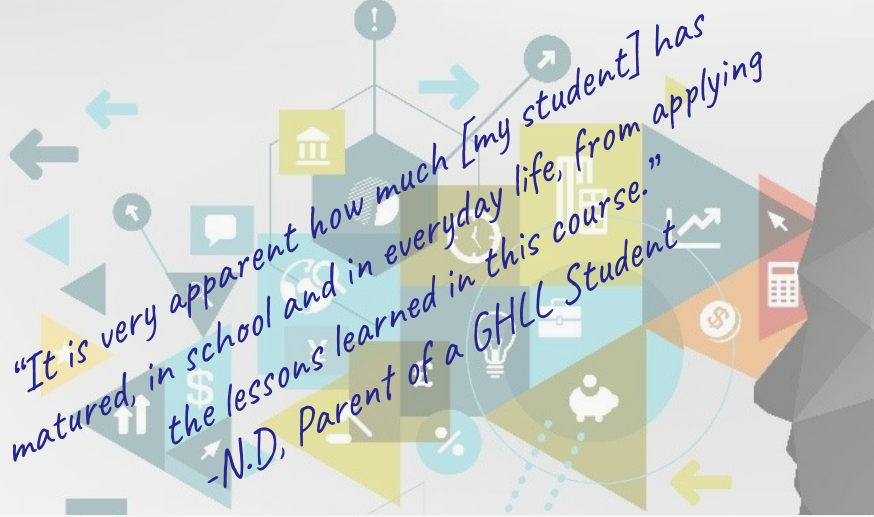
**Year-long Course: \$1250**

\*Diamond students may take up to 1.0 credit through Care2Rock with no additional charge.

[Learn more >](#)

# Add-On Programs

## → Gifted and Higher Level Learner Program



Program Pricing for 3rd-4th Graders

Program Pricing for 5th-8th Graders

	Bronze	Silver	Silver Premium	Gold	Platinum	Diamond
1 Semester	\$550			\$400		✓
1 Year	\$1,100			\$800		✓

Program Pricing for 3rd-4th Graders

Program Pricing for 5th-8th Graders

	Bronze	Silver	Silver Premium	Gold	Platinum	Diamond
1 Semester	\$650			\$500		✓
1 Year	\$1,200			\$900		✓

- Receive mentorship to actualize and develop God-given capability
- Solve real world problems and create positive change
- Learn how to learn and sharpen skills
- Improve self-sufficiency and adaptability
- Sharpen the mind with research based BrainHQ brain training games

The GHLL Program is for eligible 3rd - 8th graders.

To determine your child's eligibility for the GHLL Program, you can submit a nomination form.

To request a nomination form, contact [giftedhll@enlightiumacademy.com](mailto:giftedhll@enlightiumacademy.com).



# Mastery based learning



## REVIEW STUDENT WORK REGULARLY AND INSTILL THE RIGHT HABITS

- Not rushing & taking advantage of the 2nd attempts!
- Maintaining good grades
- Not falling 2 or more weeks behind
- Make sure your student is reviewing answers to previous assignments, and asking for help as questions come up and when the solutions in previous assignments are not understood.
- Ensure the student takes notes, and utilizes available resources ([LiveBinder](#), [tutoring](#)).
- Review weekly progress notices
- Growth Mindset

# Parent Involvement for Success at Enlightium?

## Before School Starts:

- Review the [Family Handbook](#)
- Prepare student workstation and computer
- Complete the [Parent Orientation Course](#)
- Student Orientation Course
- Review your students' schedule!
  - Make sure the correct courses are assigned
  - Check for state required electives
  - Review [supply list](#)
- Request a [Parent Portal](#)



# Parent Involvement for Success at Enlightenment?

- Download the [Enlightium Parents' App](#)
- Download our school [calendar](#) and PRINT one for your refrigerator and your student's work station!
- Save Staff Contact Information, for easy access

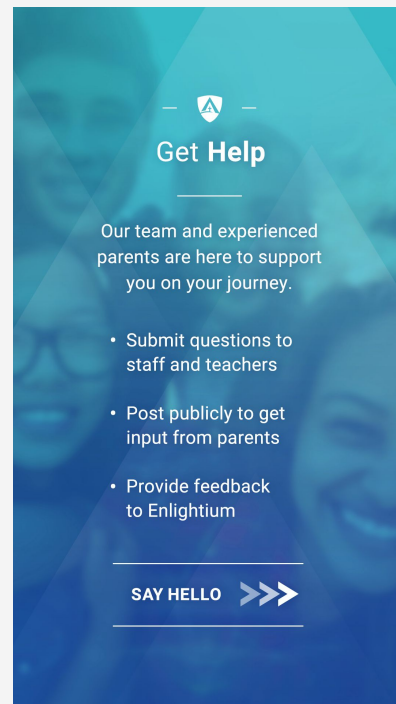
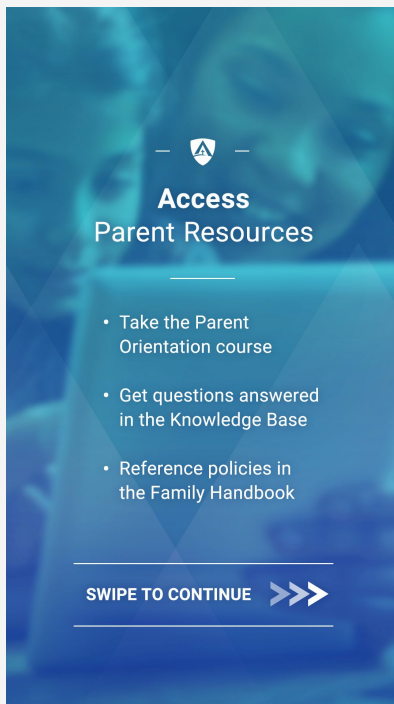
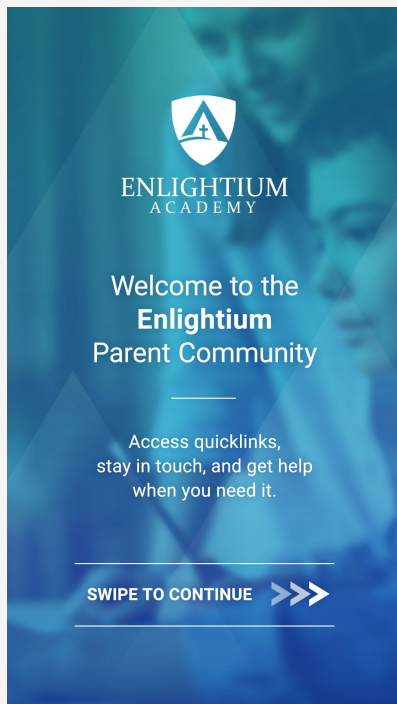
## STAFF CONTACT INFORMATION

- **General Questions:**  
(866) 488-4818 or  
[support@enlightiumacademy.com](mailto:support@enlightiumacademy.com)
- **Billing:**  
[billing@enlightiumacademy.com](mailto:billing@enlightiumacademy.com)
- **Admissions:**  
[admissions@enlightiumacademy.com](mailto:admissions@enlightiumacademy.com)
- **Progress Department:**  
[progress@enlightiumacademy.com](mailto:progress@enlightiumacademy.com)
- **Technical Support:**  
(877) 251-6662
- [Counselor Contact](#)
- [Teacher Contact](#)

# Poll #3

# What's on the Horizon?

## Community Mobile App



# Parent Involvement for Success at Enlightenment?

## MAINTAIN COMMUNICATION

- Communicate with teachers and attend the [PTCs!](#)
- Review Weekly Progress emails
- Read and respond to emails from your student's counselors
- Read through the emails you'll be receiving from Enlightenment
  - *We recommend creating a separate email account for all your school communications!*



# LiveBinder: Pop-quiz Material



Enlightium's Curriculum Resource

By: [EnlightiumAcademy](#)

Welcome to  
Enlightium's  
Curriculum  
Resource!

Grade 3

Grade 4

Grade 5

Grade 6

Grade 7

Grade 8

High School English

High School History

High School Math

Algebra I

Geometry

Course Overview

Unit Reference:  
INTRODUCTION

Unit Reference:  
LOGIC

Unit Reference:  
ANGLES AND  
PARALLELS



## Vocabulary

## Reference

**conclusion**

The *then* clause in a conditional statement.

**conditional or implication**

Two statements connected by the form If ..., then....

**conjunction**

A statement formed by combining two statements with the word *and*.

**contrapositive of a conditional**

A statement formed by interchanging the hypothesis and the conclusion in a conditional statement, and negating both.

**converse of a conditional**

A statement formed by interchanging the hypothesis and the conclusion in a conditional statement.

**deductive reasoning**

Reasoning that leads from statement of a general fact to a specific conclusion

**disjunction**

A statement formed by combining two statements with the word *or*.

**hypothesis**

The *if* clause in a conditional statement.

**inductive reasoning**

The process of making a general conclusion based on specific examples.

**inverse of a conditional**

A statement formed by negating both the hypothesis and the conclusion in a conditional statement.

**negation**

If  $p$  is a statement, the new statement, not  $p$  or  $\neg p$  is false is the negation of  $p$ .

**statement**

A theoretical declaration made in speech or writing; used to prove logical reasoning.

**true-false statement**

A sentence that is true or false, but not both.

# What's new this year?

- IXL Diagnostic testing and remediation/enrichment
- eLibrary access
  - Powered by OverDrive and Sora





If you are enrolling before September 20, 2021, you can register for a social activity during Student Social Week. Students in grades 6-8 can choose from five options:

- [Bible Studies](#) (**most relaxing**) - join other students and an Enlightium teacher in Bible Studies twice a month
- [Book Clubs](#) (**most critical thinking**) - select from a list of books and join a group to discuss themes and more
- [Math Olympics](#) (**most challenging**) - compete with students from both Enlightium and other schools in either computation or mathematical reasoning
- [Pen Pal](#) (**most popular**) - write to another Enlightium student living elsewhere in the U.S. or world
- [Spelling Bee](#) (**most competitive**) - three competitions are held each year (and sometimes in person)

Additionally, two more social activities will be added this year:

- [Chess Club](#) (grades 3–8 only)
- A mystery option chosen by Enlightium families

If you are enrolling on or after September 20, 2021, you won't be able to register for a social activity, but you will still have a few social options:

- [Bible Studies](#) (**most relaxing**) - a link to join is sent twice a month in Ignitia
- [Pen Pal](#) (**most popular**) - you can set up an unofficial Pen Pal in the [Pen Pal Program group](#) in the Enlightium Parents app

Search “Student Social Week” at [support.enlightiumacademy.com](http://support.enlightiumacademy.com) for details on each event.

# Additional Resources

Troubleshooting & Computer Prep: <https://www.enlightiumacademy.com/about/technical-support>

Naviance - College Readiness Platform: <https://www.enlightiumacademy.com/login#naviance>

Calendar: <https://www.enlightiumacademy.com/current-families/calendar>

Parent Teacher Conferences: <https://www.enlightiumacademy.com/current-families/parent-teacher-conferences>

Meet your Teachers: <https://www.enlightiumacademy.com/about/teachers>

Curriculum Resources: <https://www.livebinders.com/b/2686962>

Tutoring: <https://www.enlightiumacademy.com/admissions/tutoring-sessions>

# Questions?

- Need help looking into state homeschooling requirements?
- Anything else?