



BJU CURRICULUM

2ND GRADE



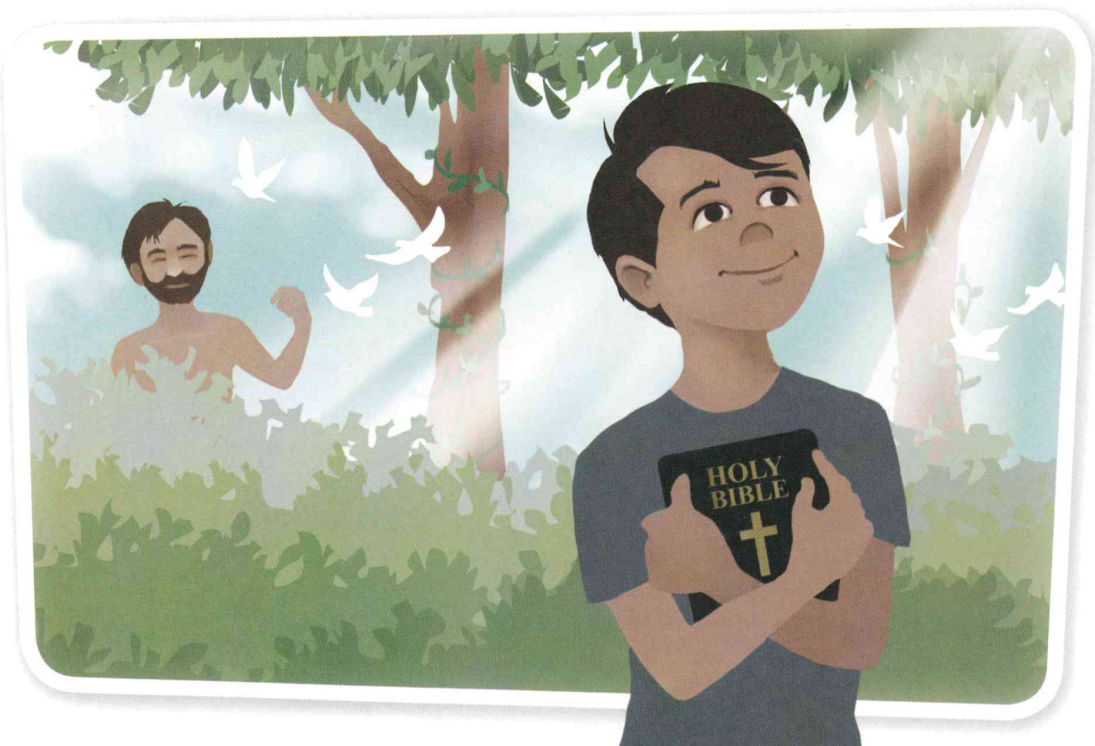
Worldview

The way a person thinks about the world is called a **worldview**. Everyone has a worldview. Scientists have a worldview.

A Biblical Worldview

Some scientists have a biblical worldview. A person with a *biblical worldview* believes the Bible is always true. The Bible guides his decisions. He knows that God created a perfect world in six days. But the world is not perfect now. Adam disobeyed God. Because of sin, pain and death entered the world (Genesis 3:17–19). But God still loves and cares for His world.

God created people in His *image*, or likeness (Genesis 1:26). God wants you to show His love (Matthew 22:39). Science helps you show love to other people. God wants you to use His world wisely. God gave people the job of caring for the earth (Genesis 1:28). Learning about the world helps you praise and honor God.



Bugged!

You are with your family at the park. It is a picnic with your baseball team. The insects are bothering you. They keep getting in your food. You look around your table. You see plastic forks, paper plates, straws, plastic cups, and napkins.

What can you design to keep the bugs out of the food? In this STEM activity, you will find an answer to a real-life problem. You will use the engineering design process.



Science Inquiry Skills

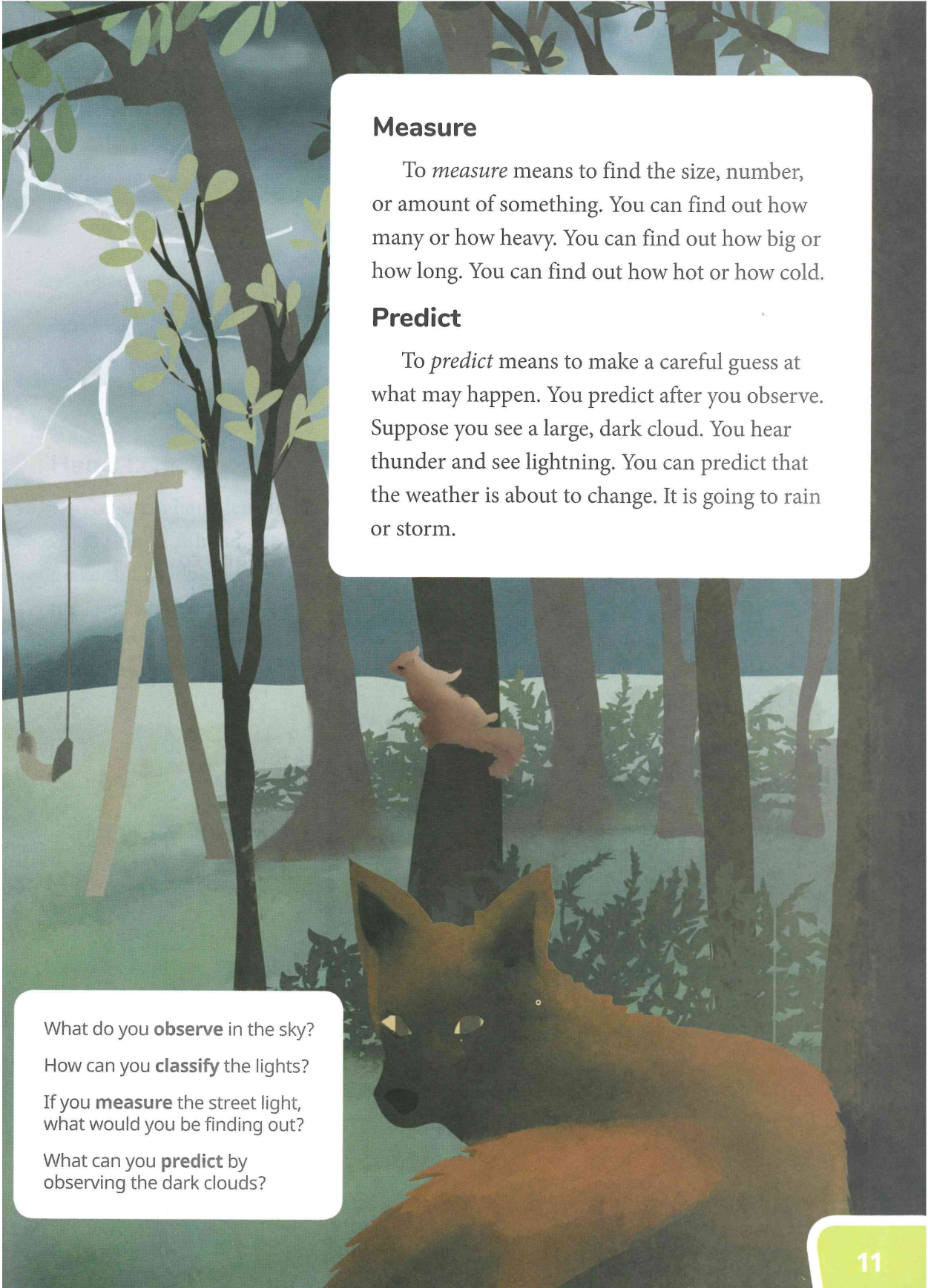
Scientists use different skills to study the world. These skills are called **science inquiry skills**. The inquiry skills help scientists gather and use facts. You can use science inquiry skills to learn about God's world.

Observe

You *observe* when you use your senses to find out something. You see, hear, taste, smell, and touch.

Classify

To *classify* means to group things that are alike. You can classify things by kind or size. You can classify things by color or shape. You can classify shoes in different ways. You can classify them by color or kind. You can classify shoes by those with shoelaces and those without shoelaces.



Measure

To *measure* means to find the size, number, or amount of something. You can find out how many or how heavy. You can find out how big or how long. You can find out how hot or how cold.

Predict

To *predict* means to make a careful guess at what may happen. You predict after you observe. Suppose you see a large, dark cloud. You hear thunder and see lightning. You can predict that the weather is about to change. It is going to rain or storm.

What do you **observe** in the sky?

How can you **classify** the lights?

If you **measure** the street light, what would you be finding out?

What can you **predict** by observing the dark clouds?

Send Off!

What do you know about force and a Ping-Pong ball? A strong force pushes a ball fast and far. When the ball touches other objects, the ball can change directions. A strong force will make the ball's speed faster. A light force will make the ball's speed slower.

In this STEM activity, you will make a ball launcher. You will design a way to send the Ping-Pong ball off! You want the Ping-Pong ball to move or knock over an object.

